

# Single Cylinder, Swiss Round Profile 22 mm HZCH



## Application:

For all mortise door locks in Swiss round profile to be opened on one side only. The cam operated the bolt and latch in door locks with key latch operation.

## Specification:

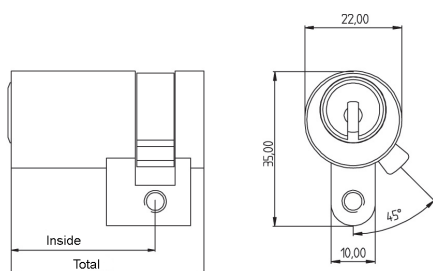
Housing supplied in solid natural brass with nickel plating

Reversible key made from nickel silver

Emergency key function

(Please order emergency key separately, see chapter "Special Functions and keys").

Mitnehmer: standardmäßig 2x12-fach umstellbar (in 15° Schritten, die Mitnehmerstellung 0 ist lt. RAL-Norm nicht gestattet):



## Included with the cylinder:

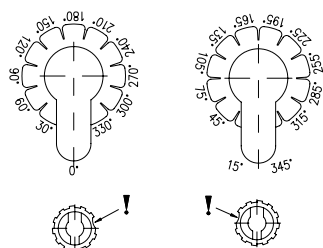
2 reversible keys (Specify separately, see "Special Functions and Keys" for options)

Plastic key clip in dark red for Kaba penta, in dark blue for all other systems

1 cylinder fastening screw M5 x 65 mm

Security Card for ownership registration and ordering duplicate keys

Installation and Maintenance Instructions



Standard setting: 30° to the right with marking point viewed from front side of cylinder.

- 1) Unscrew cover on rear side of cylinder using a coin or screwdriver.
- 2) Remove coupling and cam hub.
- 3) Align cylinder on the template and turn cam to the desired position.
- 4) Slide cam hub into the housing as per the diagram.
- 5) Insert coupling into the cam hub.
- 6) Screw cover back on until it closes even with the housing.

<b>Premier Systems:</b>	<b>6</b> Kaba penta	<b>7</b> Kaba quattro plus	<b>12</b> Kaba gemini plus
Patent expired systems	<b>4</b> Kaba quattro S	<b>2</b> Kaba gemini S	
Old systems	<b>3</b> Kaba quattro <sup>1)</sup>	<b>1</b> Kaba gemini <sup>1)</sup>	
Dealer systems	<b>5</b> Kaba experT <sup>2)</sup>	<b>19</b> Kaba maTrix <sup>2)</sup>	
Old dealer system		<b>9</b> Kaba gemini T <sup>2)</sup>	

**Lengths** Standard - each side from 32 to 102 mm in 5 mm steps  
Special over 102 mm

**Options** (See „Special Functions and Keys“ for details and further options)

DF	Duplo function				
BAZ	Construction key	BAZ3	Construction key 3	GF	Emergency key
FL360	Freewheel cam		Special Cams	KT	Electrical contact
FZG	Freewheel cam for gear operated (panic) locks				

## Standard Surface Finishes

NI - Nickel plated	MS - Brass natural	
--------------------	--------------------	--

## Optional Surface Finishes

BH - brown light	MP - Brass polished	CR - Chrome standard
BM - brown medium	MSA - Brass antique	CRM - Chrom dull
BD - brown dark		CRP - Chrome polished
NIC - chemically nickel plated		
GO - gold plated		

## Order Code System

System Code.Cylinder Type.Length(function).Surface finish.Option

Example:

6.HZCH.32.NI = penta.double cylinder.32.nickel plated

<sup>1)</sup> Kaba gemini and Kaba quattro are only offered for existing master key systems.

<sup>2)</sup> Kaba experT, Kaba maTrix and Kaba gemini T are only sold to authorized dealers.

Please note that certain options, finishes and dimensions may be subject to extended factory lead times. Please contact our office via email on [sales.uk@kaba.com](mailto:sales.uk@kaba.com) or telephone (0) 870 000 5625.