

Thumbturn Cylinder Europrofile 17 mm DKZ



Application:

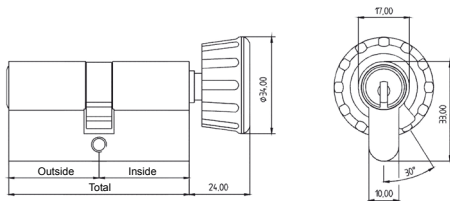
For all mortise door locks in Europrofile. The thumbturn knob is installed on the inside allowing the door to be safely un/locked from the inside without a key.

Specification:

Housing supplied in solid natural brass or with nickelplating
Reversible key made from nickel silver
Emergency key function
(Please order emergency keys separately, see chapter "Special Functions and Keys").

Included with the cylinder:

2 reversible keys (Specify separately, see "Special Functions and Keys" for options)
Plastic key clip in dark red for Kaba penta, in dark blue for all other systems
1 cylinder fastening screw M5 x 65 mm
Security Card for ownership registration and ordering duplicate keys
Installation and Maintenance Instructions



Round knob, standard, order code: "RK"

| | | | |
|-------------------------|-------------------------------------|--------------------------------------|----------------------------|
| Premier Systems: | 6 Kaba penta | 7 Kaba quattro plus | 12 Kaba gemini plus |
| Patent expired systems | 4 Kaba quattro S | 2 Kaba gemini S | |
| Old systems | 3 Kaba quattro ¹⁾ | 1 Kaba gemini ¹⁾ | |
| Dealer systems | 5 Kaba expert ²⁾ | 19 Kaba maTriX ²⁾ | |
| Old dealer system | | 9 Kaba gemini T ²⁾ | |

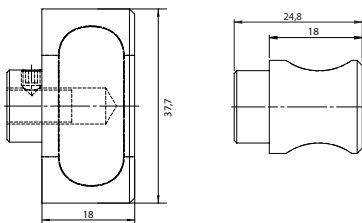
Lengths Standard - each side from 30 to 100 mm in 5 mm steps
Special over 100 mm



Mega knob, order code: "MK"

Options (See „Special Functions and Keys“ for details and further options)

| | | | | | |
|--|--|------|--------------------|------|---------------------|
| RK | Round knob | MK | Mega knob | OK | Oval knob |
| MK Mega Knob is only available in nickel coated (NI) and polished brass (MP) | | | | | |
| DF | Duplo function | | Special Cams | GF | Emergency key |
| BAZ | Construction key | BAZ3 | Construction key 3 | KT | Electrical contact |
| FZG | Freewheel cam for gear operated (panic) locks | | | BL | Blind on one side |
| RB | Relative cam movement | | | SSW | Weather protection |
| DIN.ZS | DIN18252 certified: pulling protection | | | DIN | Drilling protection |
| VDSB.ZS | VdS certified: Pulling and drilling protection | | | VDSB | Drilling protection |
| LAM | Pulling protection with steel shims in housing | | | ST | Steel housing |



Oval D-line knob, order code "OK"

Standard Surface Finishes

| | | |
|--------------------|--------------------|--|
| NI - Nickel plated | MS - Brass natural | |
|--------------------|--------------------|--|

Optional Surface Finishes

| | | |
|--------------------------------|---------------------|-----------------------|
| BH - brown light | MP - Brass polished | CR - Chrome standard |
| BM - brown medium | MSA - Brass antique | CRM - Chrom dull |
| BD - brown dark | | CRP - Chrome polished |
| NIC - chemically nickel plated | | |
| GO - gold plated | | |

Order Code System

System Code.Cylinder Type.Length(function)+Length(knob type).Surface finish.Option

Example:

6.DKZ.30+40RK.NI = penta.thumbturn cylinder.30+40round knob.nickel plated

¹⁾ Kaba gemini and Kaba quattro are only offered for existing master key systems.

²⁾ Kaba expert, Kaba maTriX and Kaba gemini T are only sold to authorized dealers.

Please note that certain options, finishes and dimensions may be subject to extended factory lead times. Please contact our office via email on sales.uk@kaba.com or telephone (0) 870 000 5625.