

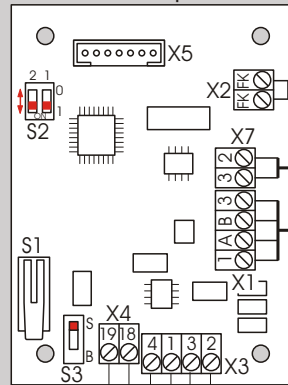
0214TV200anal.DCW_01

Anschlussplan TV2xx an TV DCW Adapter

S2 = Komponentenadresse

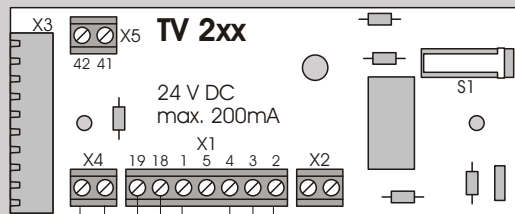
Schalter	Adresse
1 2	
0 0	1
1 0	2
0 1	3
1 1	4

TV DCW Adapter



4 x 2 x 0,6

TL-S TMS (X6)



TK 1xx
TK 2xx

Änderungen vorbehalten