

WN 056748-45632  
08/09

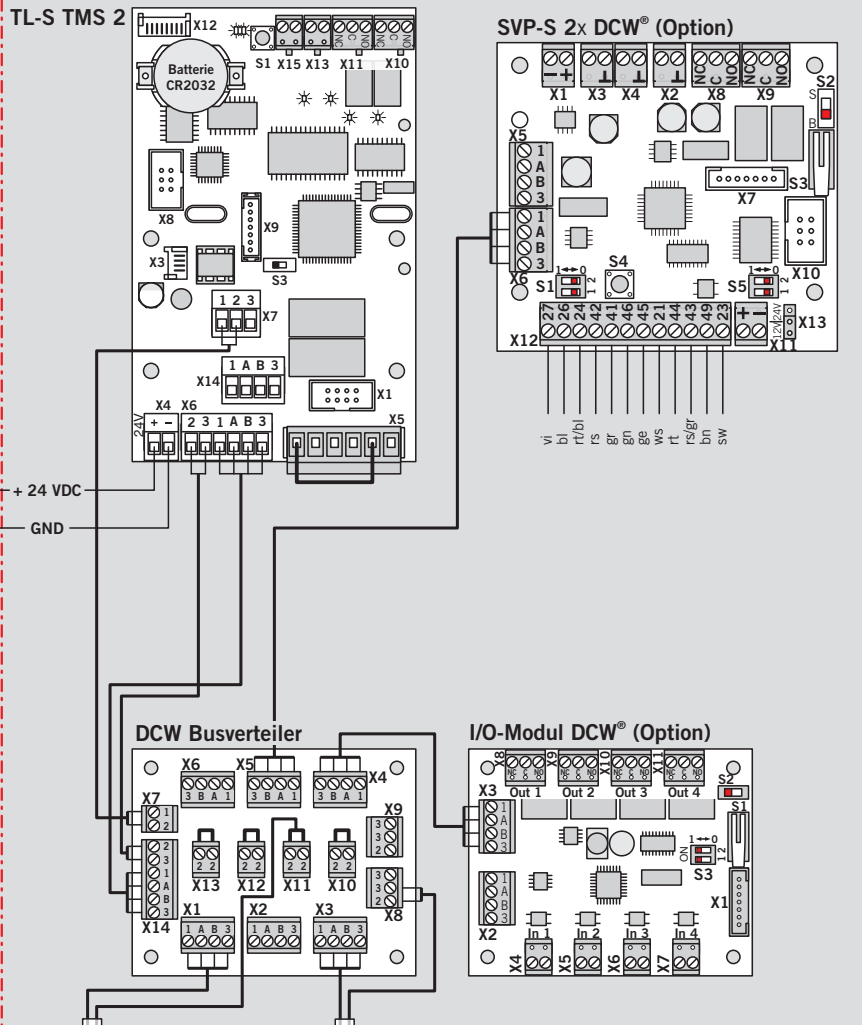
- RZ-TMS 24V
- + TL-S DCW®
- + TV XXX DCW®
- + SVP-S DCW® (Option)

RZ-TMS 24V

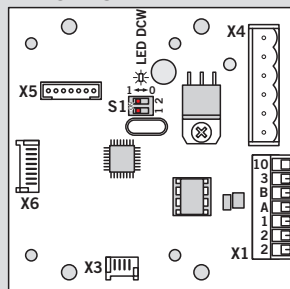
TL-S TMS 2

SVP-S 2x DCW® (Option)

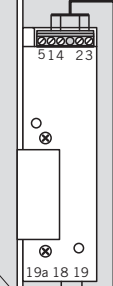
Netzteil / Power supply  
nach DIN EN 60950  
24V DC +15% / -5%  
1,5 A



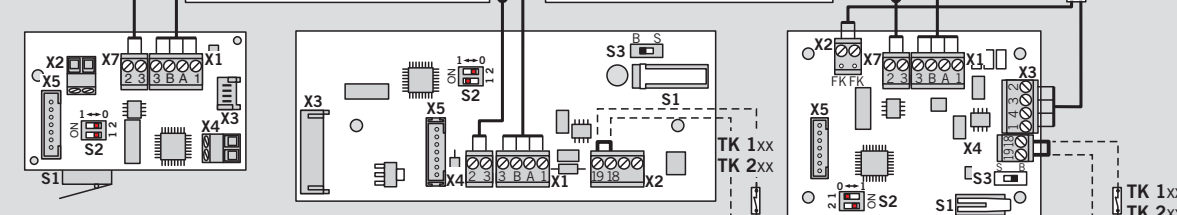
TL-S DCW®



TV 50x



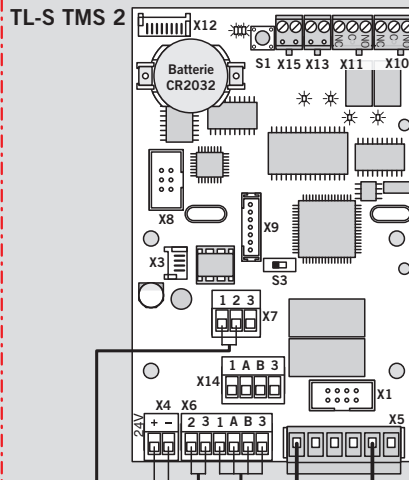
1 - Y (ST) Y 4 x 2 x 0,8  
Kabel geschützt verlegen



**1** TV 1xx DCW® -- und/oder -- TV 2xx DCW® -- und/oder -- TV 50x DCW®

RZ-TMS 24V  
+ TL-S DCW®  
+ TV XXX DCW®

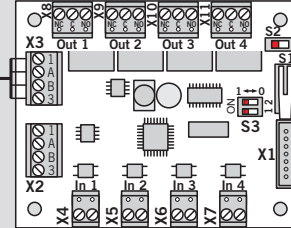
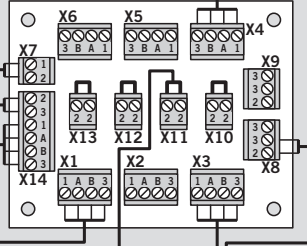
RZ-TMS 24V



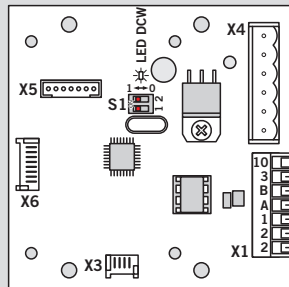
Netzteil / Power supply  
nach DIN EN 60950 + 24 VDC  
24V DC +15% / -5% GND  
1,5 A

DCW Busverteiler

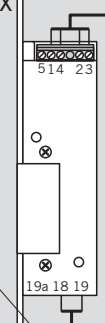
I/O-Modul DCW® (Option)



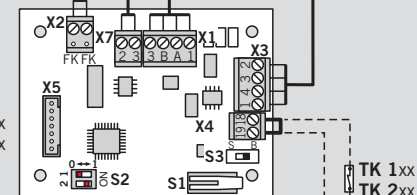
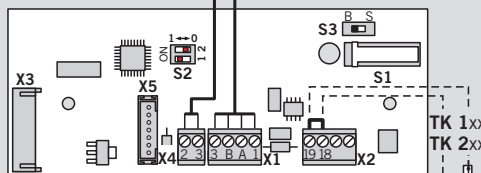
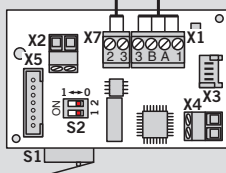
TL-S DCW®



TV 50x

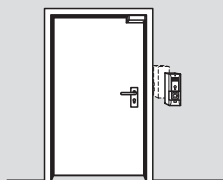


I - Y (ST) Y 4 x 2 x 0,8  
Kabel geschützt verlegen



2 TV 1xx DCW® -- und/oder -- TV 2xx DCW® -- und/oder -- TV 50x DCW®

RZ-TMS 24V  
 + 2x TL-S DCW®  
 + TV 1xx DCW®



**Parameter setup**

128 100 #  
 127 101 #

**Sonderfunktionen**

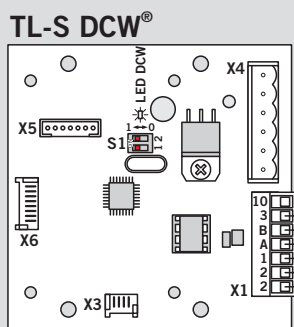
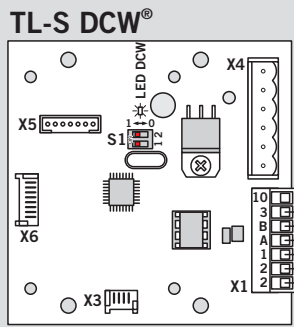
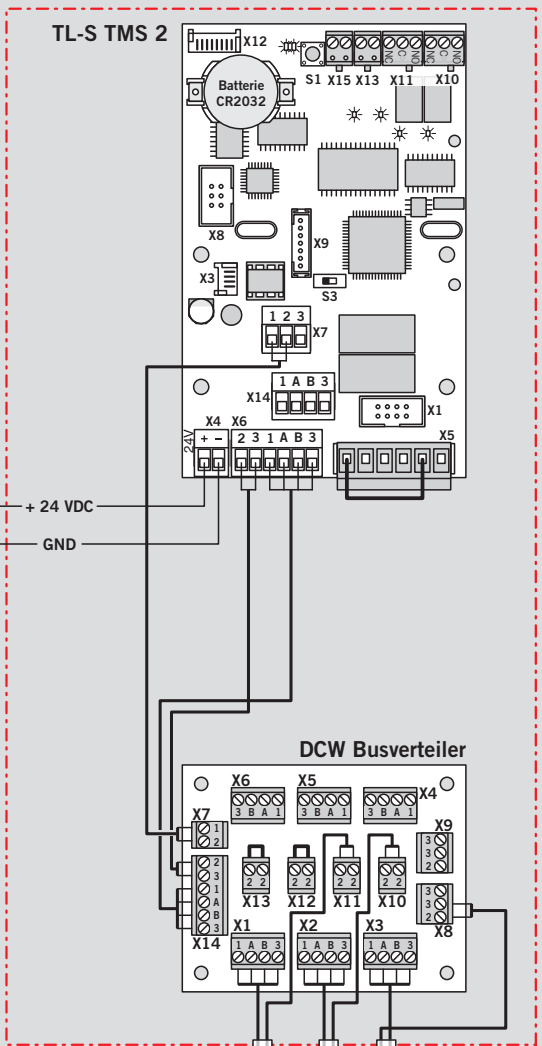
Externe Geräte

- Notschalter ist angeschlossen (an Klemme X7)
- Rauchmelder ist angeschlossen (an Klemme X7)
- Rauchmelder ist angeschlossen (an TMS-IO4)

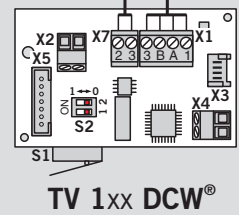
TMS-Software interface showing various configuration options.

Netzteil / Power supply  
 nach DIN EN 60950  
 24V DC +15% / -5%  
 1,5 A

RZ-TMS 24V



I - Y (ST) Y 4 x 2 x 0,8  
 Kabel geschützt verlegen



Anderungen vorbehalten  
Subject to change without notice