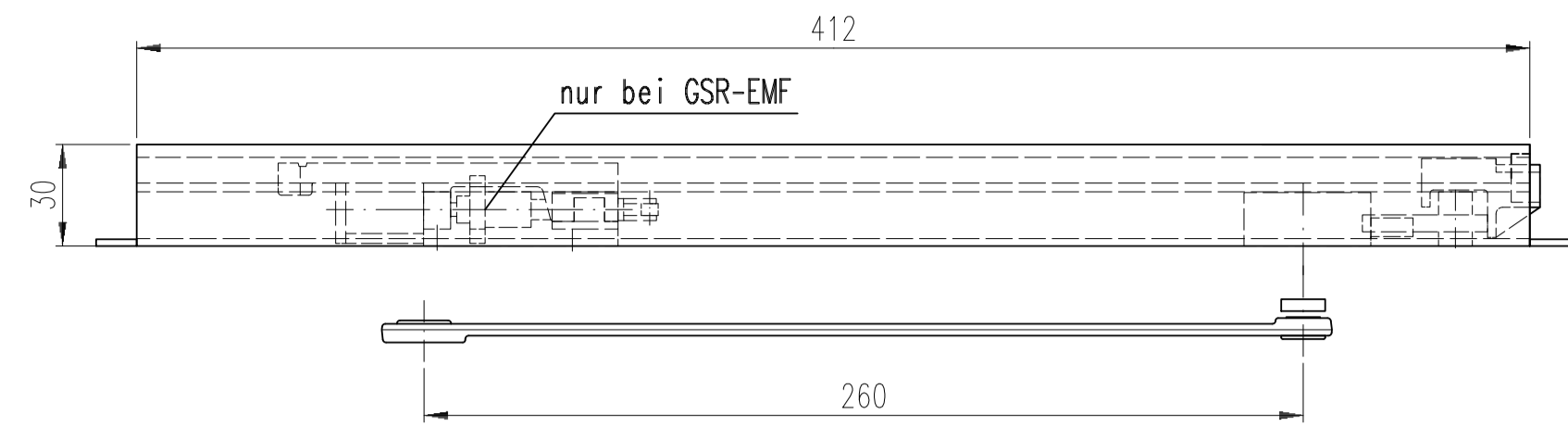
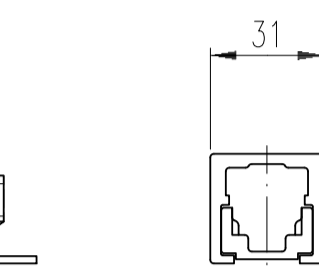
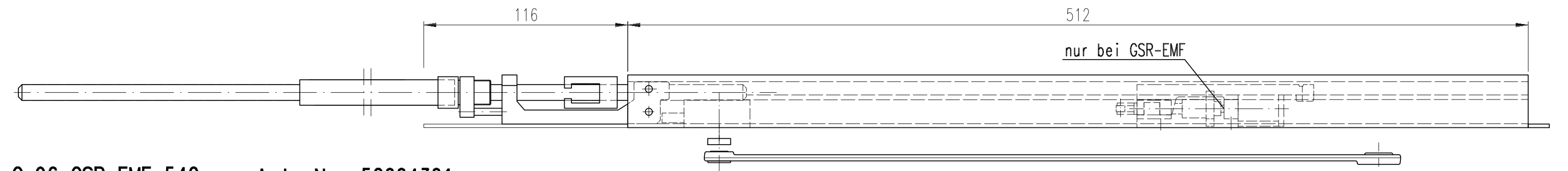
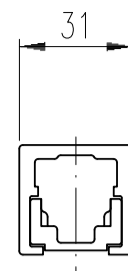


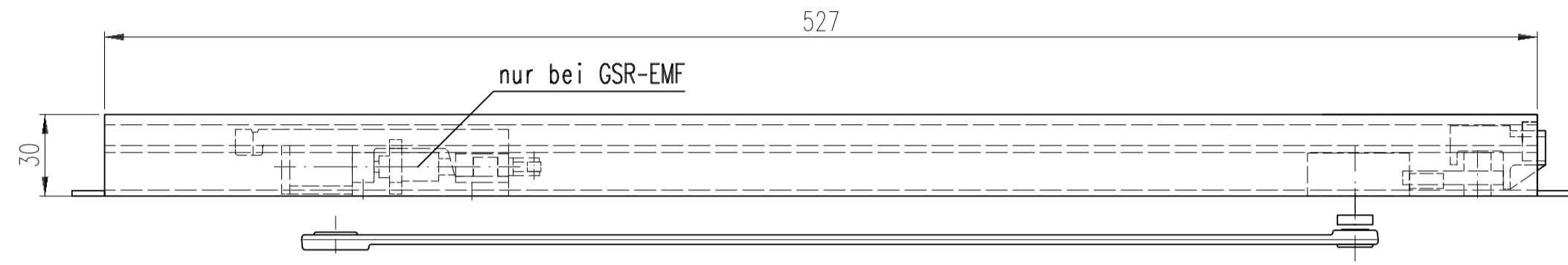
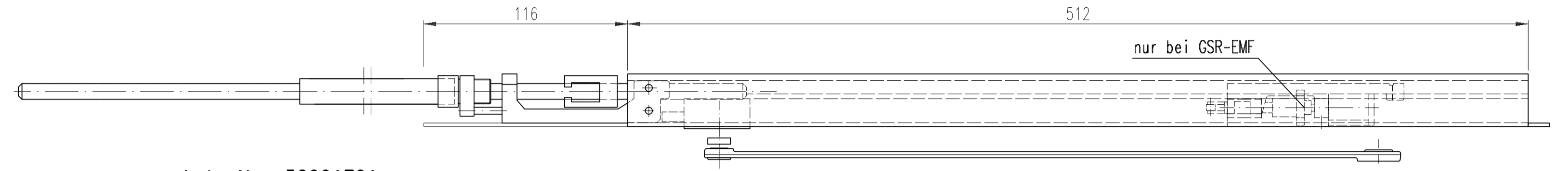
ITS96 Komponenten K8/K12



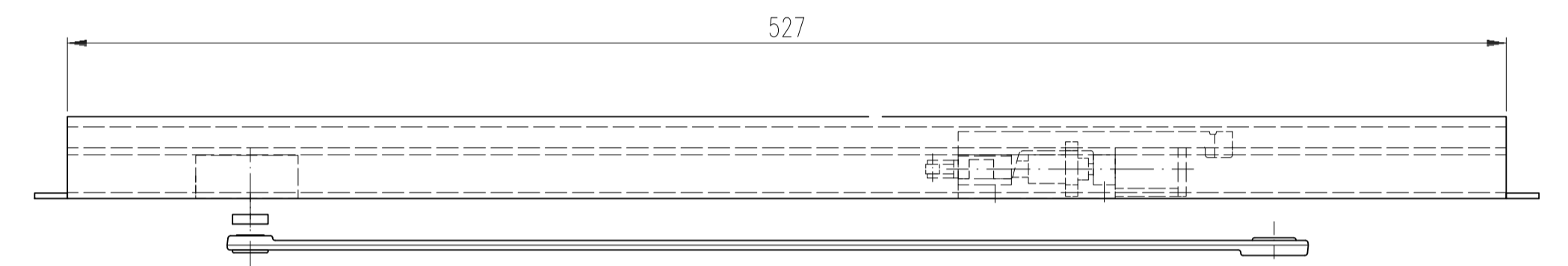
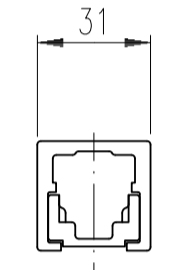
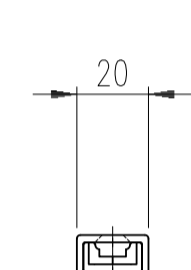
DORMA Gleitschiene G 96 GSR EMF 540mm Art.-Nr. 52004301
 DORMA Gleitschiene G 96 GSR 540mm Art.-Nr. 52004201



DORMA Gleitschiene G 96 GSR EMF Art.-Nr. 52001701
 DORMA Gleitschiene G 96 GSR Art.-Nr. 52001801

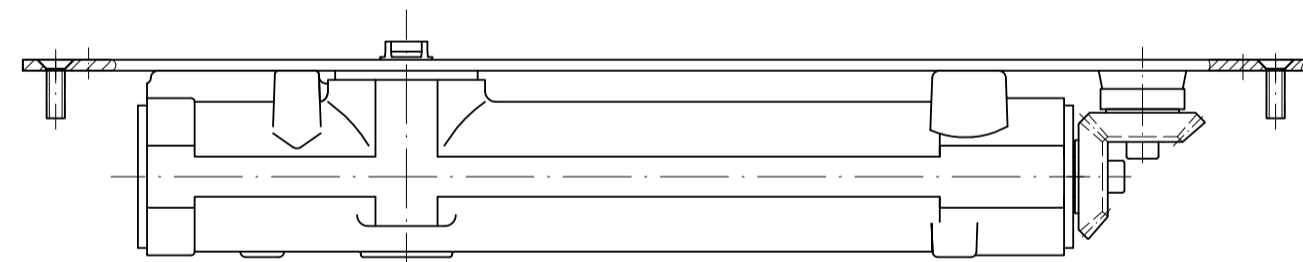
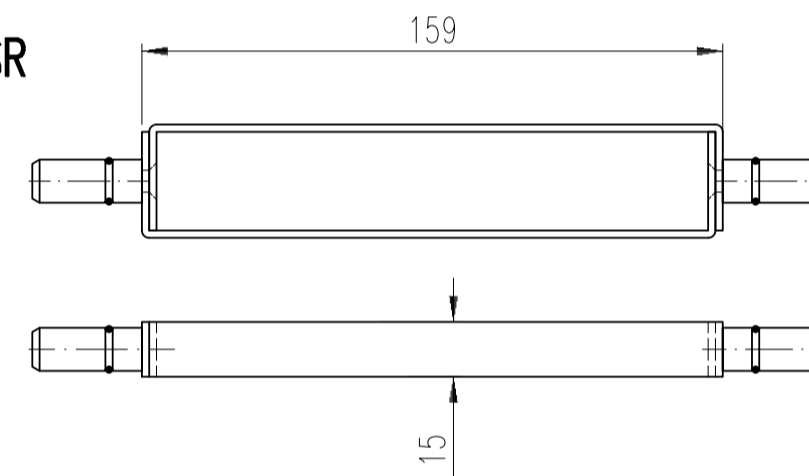


DORMA Gleitschiene G 96 N 20
 DIN-links Art.-Nr. 52003701
 DIN-rechts Art.-Nr. 52003801

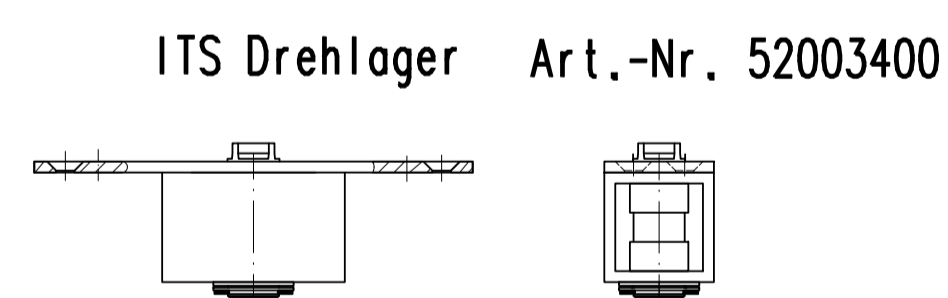
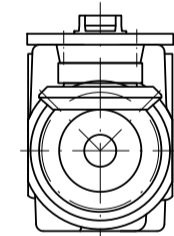


DORMA Gleitschiene G 96 EMF
 DIN-links Art.-Nr. 52001501
 DIN-rechts Art.-Nr. 52001601

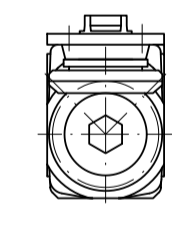
DORMA Verbindungsrahmen GSR
 Art.-Nr. 524004400
 (Einsatz bei Einbau von E-Öffner)



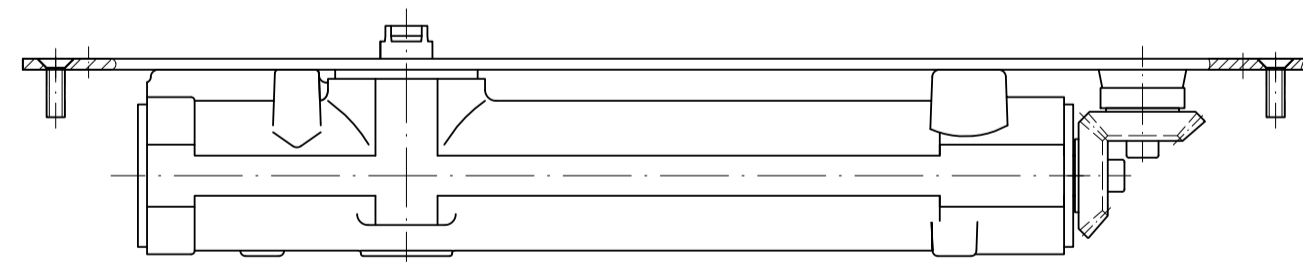
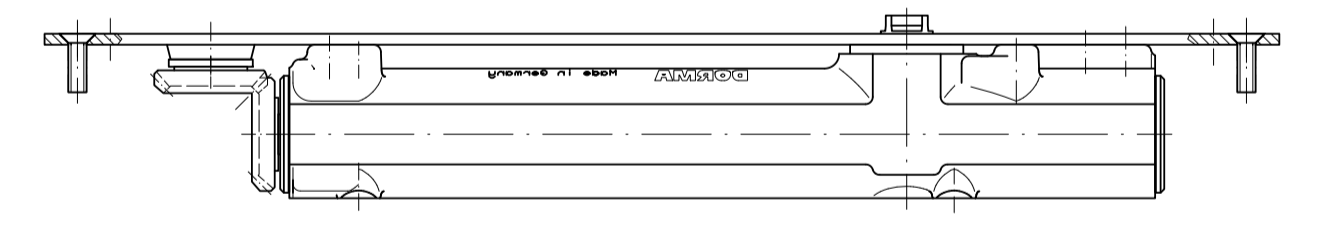
ITS96 3-6
 Art.-Nr. 52250150



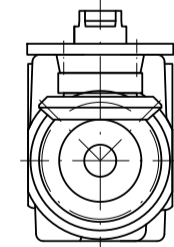
ITS Drehlager Art.-Nr. 52003400



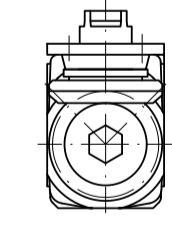
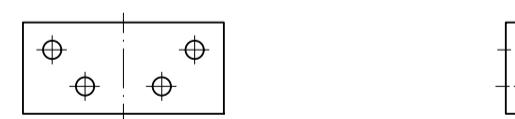
ITS96 2-4
 Art.-Nr. 52400150



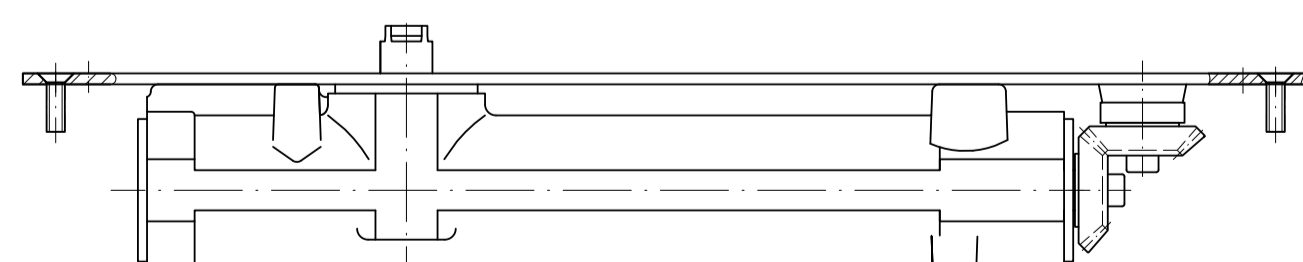
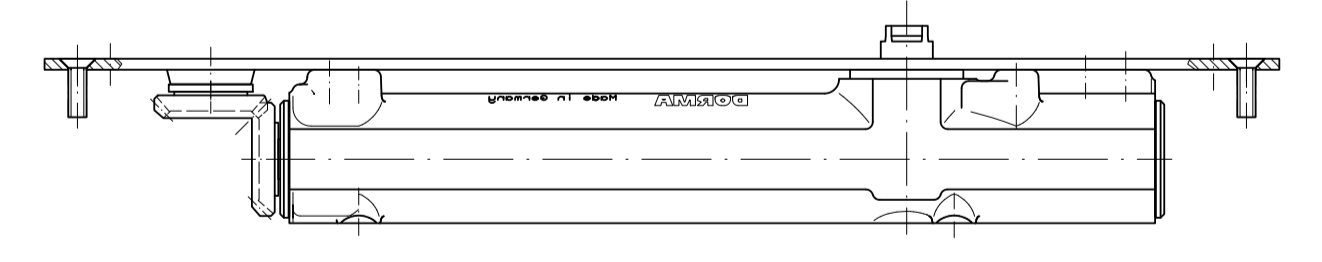
ITS96 3-6
 mit 4mm verl. Achse
 Art.-Nr. 52260150



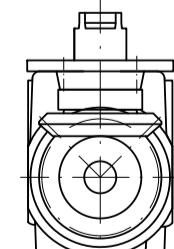
Befestigungsplatte 52000300



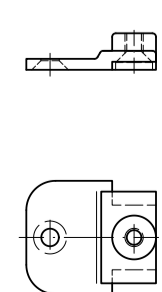
ITS96 2-4
 mit 4mm verl. Achse
 Art.-Nr. 52410150



ITS96 3-6
 mit 8mm verl. Achse
 Art.-Nr. 52270150



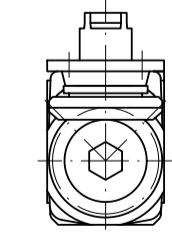
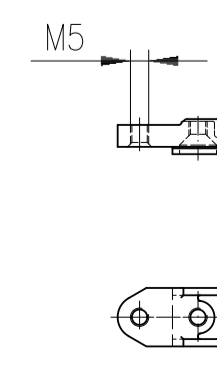
Befestigungselement
 52000105



Befestigungselement
 52000205



Befestigungselement
 52000405



ITS96 2-4
 mit 8mm verl. Achse
 Art.-Nr. 52420150

