



Axessor Software

AS284

Release 4.0.5.1

Release Note

- RN_AS284-R4051_20220829_en

EN



Table of contents

1	About this document	3
1.1	Validity	3
1.2	Target group	3
2	Modifications	4
2.1	Summary	4
2.2	Detailed information 4.0.5.1	4
3	Operation	5
3.1	Polling	5
3.2	System inputs and outputs	6
3.3	Batch programming	7
4	Additional content	10
4.1	New software release	10
4.2	Support	10

1 About this document

1.1 Validity

This document describes the product:

Product designation:	AS284 management software
Version:	4.0.5.1

1.2 Target group

This document is intended for:

- end users
- skilled personnel

2 Modifications

2.1 Summary

The present document refers to AS284 release 4.0.5.1

The release contains the following new features:

- New polling feature
- Using a bus cable between each lock for multiple lock system instead of additional wires when system inputs and outputs are used for controlled locking, interlocking, etc.
- Batch programming can be used for single locks or multiple lock systems

2.2 Detailed information 4.0.5.1

The new features are:

Polling

Regarding AS284, when the locks are connected to the network, the locks constantly poll and are online.

With the new polling feature, it is possible to stop polling all locks.

You can select a lock that you want to connect and configure this lock. This prevents constant data traffic on the network.

This feature is available for all locks from version 28 onwards using software version 4.0.5.1

System inputs and outputs

Previous versions of the lock firmware or software only allowed the inputs and outputs to be used for controlled locking, interlocking, door contacts, etc. when additional wires were connected.

With this new feature, it is possible to use system inputs and outputs by using a bus cable between each lock for the multiple lock system.

This feature is available for all locks from version 28 onwards when using software version 4.0.5.1

Batch programming

This feature is used for single locks or multiple lock systems. It is possible to select any setting you want to "push" to the lock estate.



Codes cannot be duplicated between locks. It is important to determine whether the settings should be applied to all locks, master locks or subordinate locks.

This feature is available for all locks from version 28 onwards when using software version 4.0.5.1

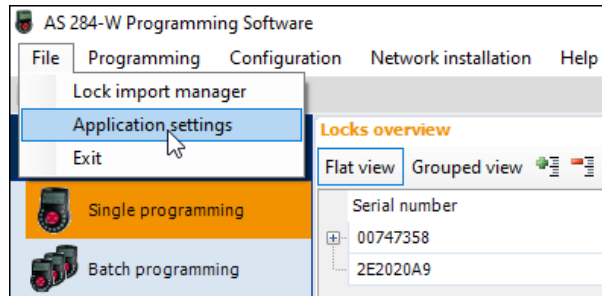
3 Operation

3.1 Polling

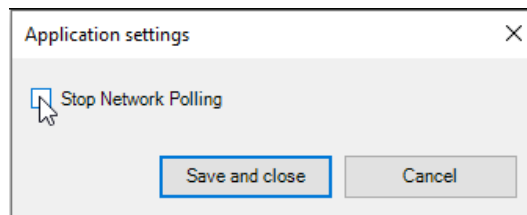


This feature is only available if the locks are configured with static IP addresses.

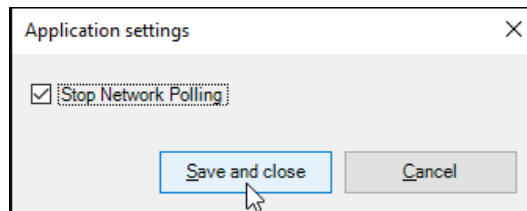
1. Start AS284 software.
2. Log in by using the admin dongle and PIN code.
3. Select 'File' and go to application settings.



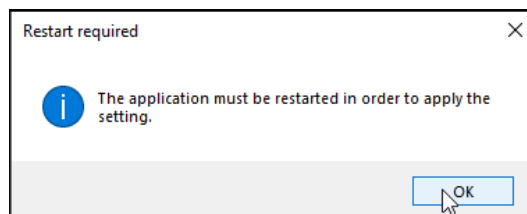
4. Activate the checkbox 'Stop Network Polling'.



5. Click on 'Save and close'.



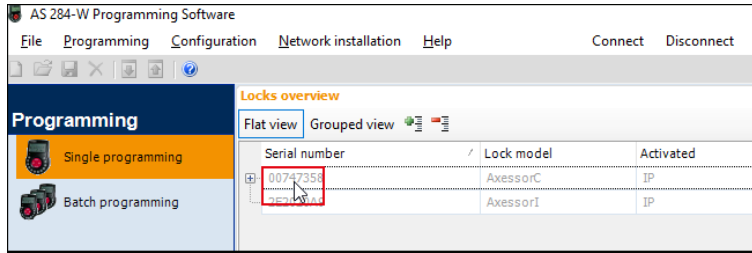
6. Click on 'OK'.



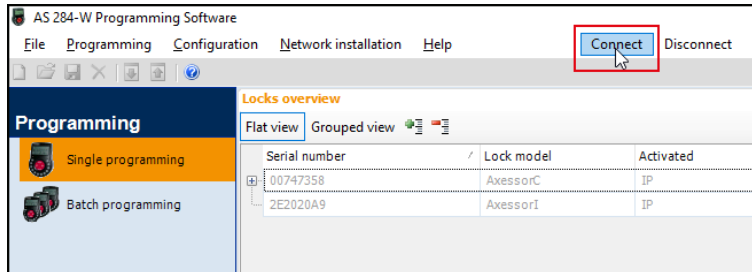
⇒ AS284 will be closed and restarted again.

Connecting locks

1. Select a lock from the list that should be connected.



2. Click on 'Connect'.



⇒ The lock is online.

To disconnect the lock, select the respective lock and click on 'Disconnect'.

3.2 System inputs and outputs

System inputs and outputs can now be controlled by using the bus cable without having external connections to the lock.



Ignore the 'Interlocking Default button'. This feature is currently in development.

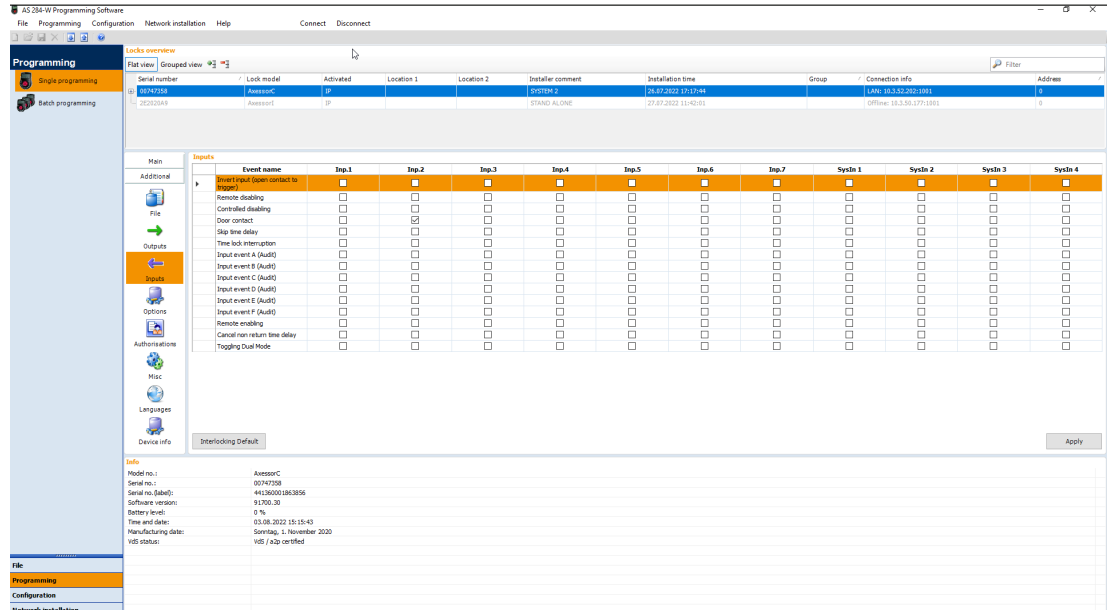


The lock must be open if the lock is connected via USB cable.

If the lock is connected via network, the Master Code must be entered but the lock must not be open.

1. Start AS284.
2. Connect to the system via USB cable or via network.
3. Select the desired lock from the list.
4. Enter the Master Code.
 - ⇒ System input (SysIn) 1, 2, 3, 4, are visible along the top and the system signals are listed as menu points.

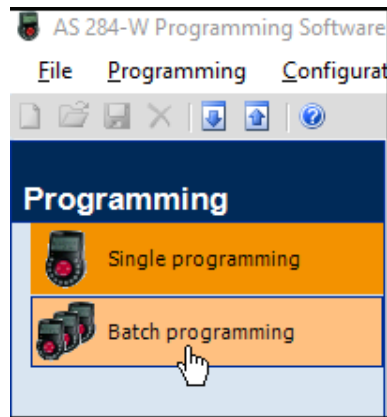
Changing inputs



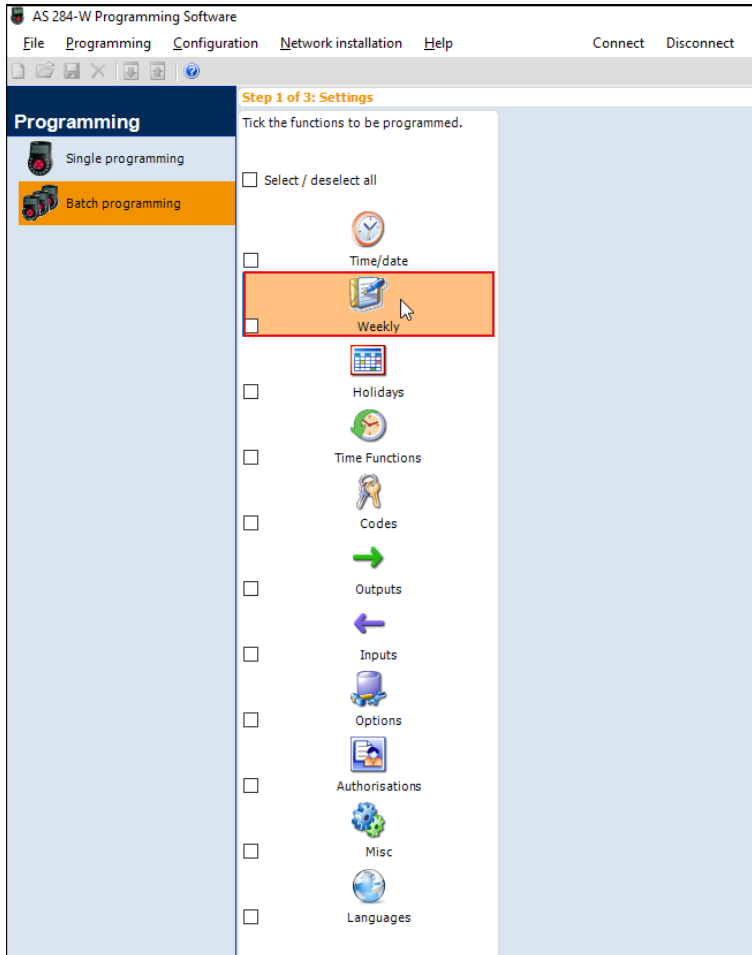
1. Select the desired input.
2. Click on 'Apply'.

3.3 Batch programming

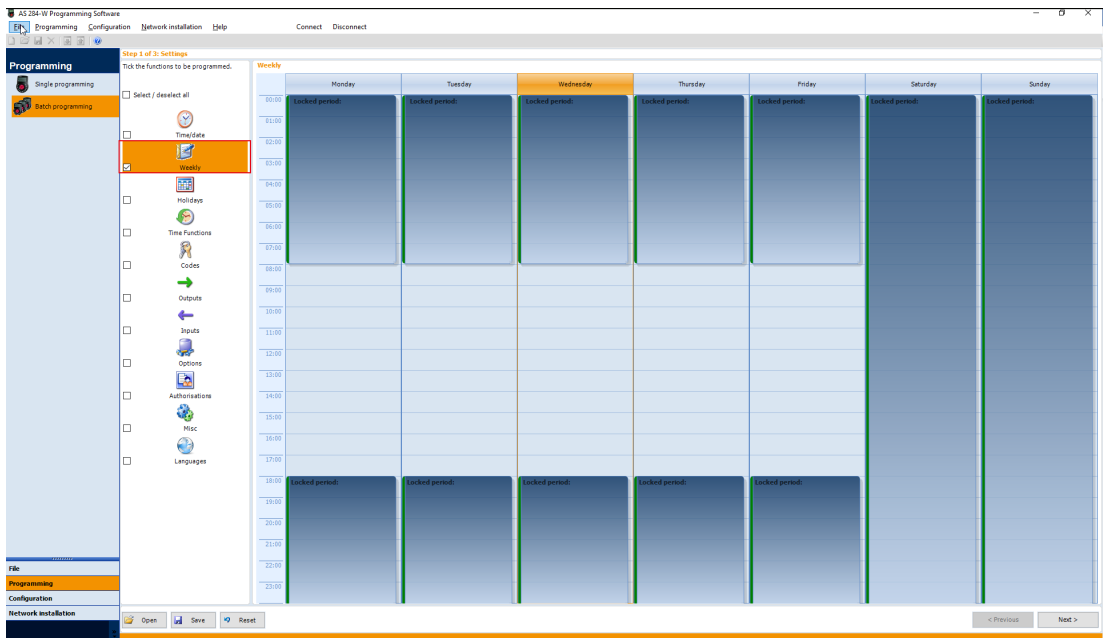
1. Start AS284.
2. Click on 'Batch programming'.



3. Click on 'OK' to confirm the information in the dialog window.
4. Select your setting by clicking on an icon.



5. Select the checkbox of the selected setting.

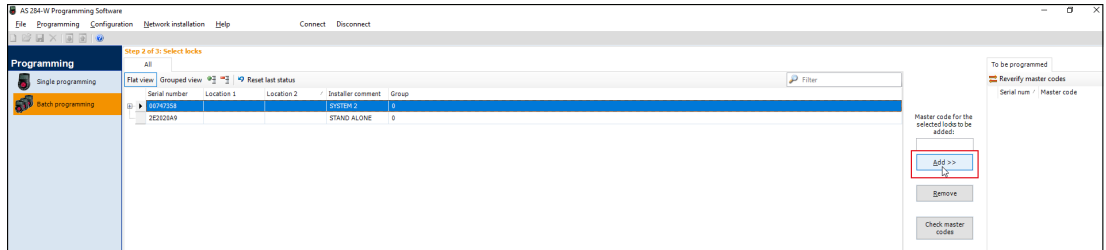


6. Click on 'Next'.



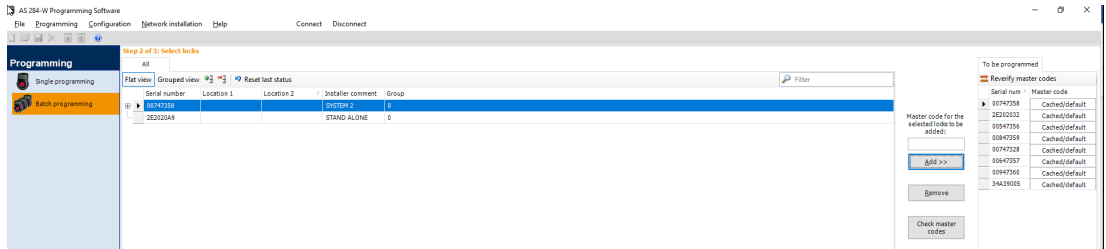
If the locks have a default Master Code, it is not required to enter a Master Code for each lock.

7. Select the desired lock for batch programming.



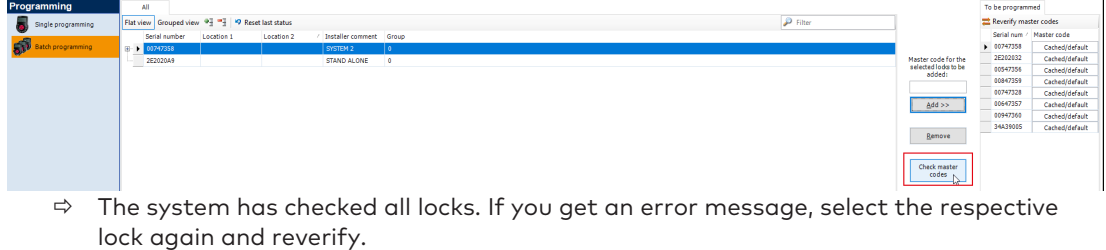
8. Click on 'Add'.

⇒ The selected lock is displayed.

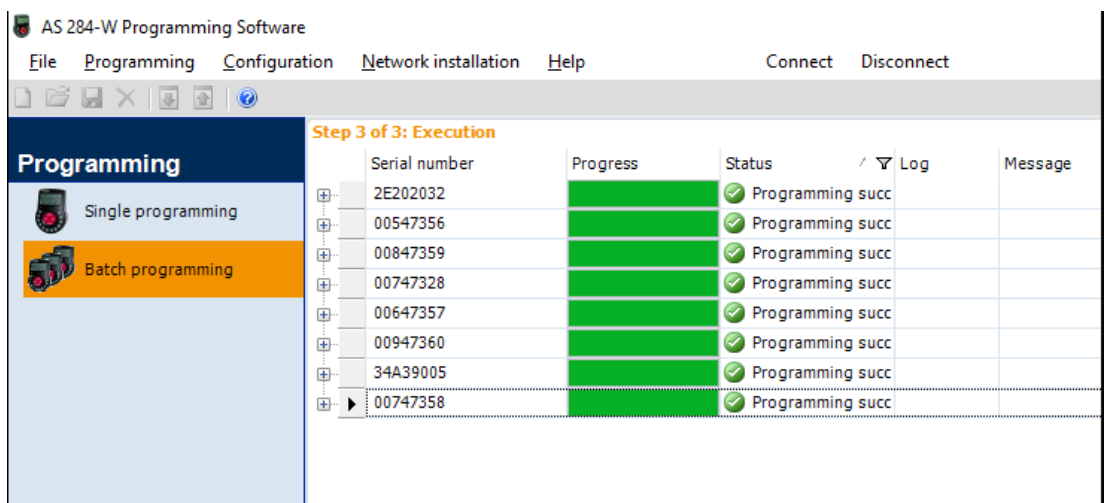
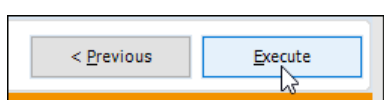
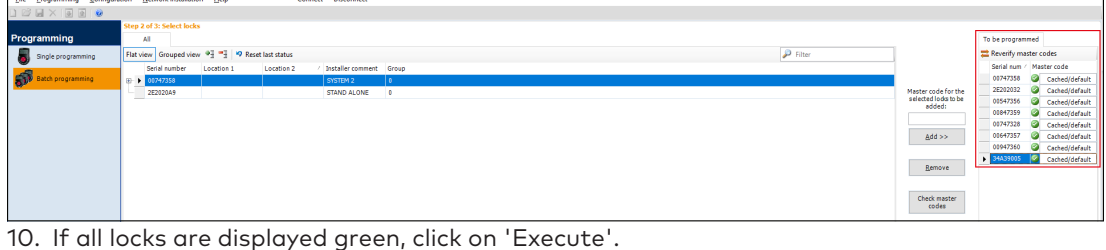


9. Click on 'Check master code'.

⇒ The system has checked all locks. If you get an error message, select the respective lock again and reverify.



10. If all locks are displayed green, click on 'Execute'.



⇒ The locks are now configured with the selected setting.

4 Additional content

4.1 New software release

To obtain the new release of AS284 management software, go to the dormakaba download page: <https://www.dormakaba.com/software/software-downloads/safe-locks/dormakaba-as284-w-management-software>

4.2 Support

If you are looking for a certain configuration, please send an email to the 3rd level support: sl.techsupport@dormakaba.com



www.dormakaba.com