

Lock cylinders

Solutions that can
save lives



Security for every door type

In any situation

User requirements for a building or apartment can vary considerably. In industrial buildings, hotels, hospitals, commercial buildings, blocks of flats or a private residence, the building conditions and door situations vary from site to site.

In everyday life, we usually need to weigh up security and convenience when it comes to access to the building or individual building areas. Mechanical, mechatronic and electronic solutions and keys are often used in such cases.

However, security in an emergency should not be disregarded. In an emergency, it must be possible to leave a building safely and the emergency services must be able to reach hazardous areas quickly in order to save lives. For this reason, the relevant doors should be equipped with lock cylinders which also release in an emergency.

Our lock cylinders are naturally also fire-protection tested according to EN 1634-1 or EN 1634-2 and comply with high security requirements.



Locked from the inside? Not an obstacle in an emergency

Emergency key function (GF)

Your requirement:

You want to be able to unlock doors in an emergency or dangerous situations, even if a key is inserted on the inside. In addition, this key should only be used in an emergency and not be misused.

Principle of operation:

For example, in the case of a double cylinder, the emergency key function makes it possible to unlock the door from the opposite side if a key is inserted on one side of the door, regardless of the rotation of the inserted key. A default key cannot be used for this; instead, a separately managed and registered emergency key is required.



Emergency opening always possible, even if a key is inserted.



The emergency override key function is available for turning and metering keys as well as for master key systems or individual closings.



A rush to the panic doors? The path is free

Freewheel cylinder (FZG) for gear-operated locks in panic doors

Your requirements:

You want to be sure that panic doors will open easily and reliably if something happens.

Principle of operation:

The FZG version of cylinders is used and required especially for gear-operated locks in panic doors. For panic door locks, it is important to consider the special requirements placed on the lock cylinder. These requirements are specified in the certificates of constancy of performance for each lock type and absolutely must be met. The FZG version of the lock cylinder ensures that the lock cylinder cam can always be rotated freely once the key has been withdrawn, even if pressure is applied to the lock cylinder cam during this process.



Free rotation on
the FZG version
of a lock cylinder

Secure storage, controlled issue

Key deposit for outdoor areas



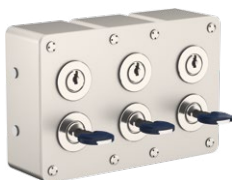
An emergency key can be stored in a protected outdoor area for emergency use. Depending on the installation, this can be built into the wall or integrated into a secured fire brigade box.

Emergency key cabinets



An emergency key cabinets – with or without glass – is a suitable option for storing emergency keys inside. An optional emergency hammer on a chain is available.

Controlled key issue



For the controlled issue of keys in the industrial, administration or hotel sector

The secured key can only be removed by depositing your own key. This remains in the depot until the removed key is returned. This locking system can also be used in administrative buildings to separate the outer and inner closing areas in order to reduce the risk of losing keys.

Your authorised dormakaba locksmith:

Subject to modifications.
WN 05544251532, Version 07/2023

Any questions?
We would be happy to advise you.

dormakaba
International Holding AG

Hofwissenstrasse 24

CH-8153 Rümlang

T +41 44 818 90 11

info@dormakaba.com

www.dormakaba.com