

## Touch Free Access Solutions for Toilet Entrance Door

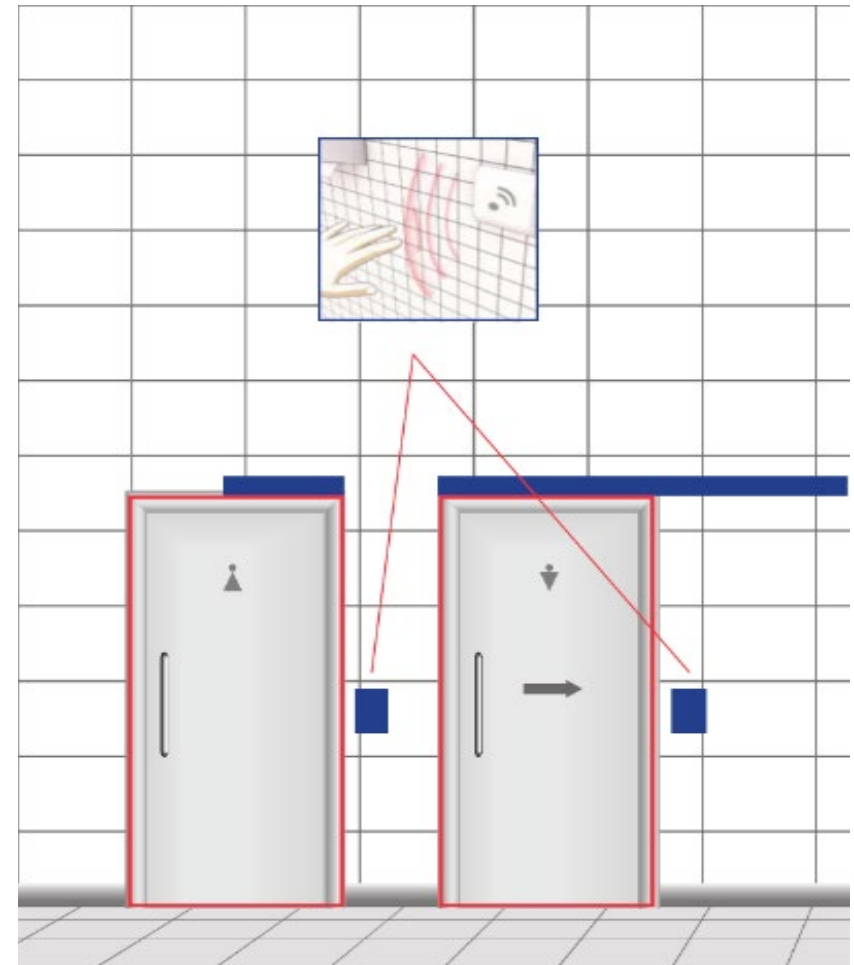
Toilet Main Entrance doors are most prone to the spread of microbes. This can lead to the spread of microbes through common touch points, like the door handle used by people while leaving the toilet. The spread of microbes can be prevented by enabling Touch Free Access with dormakaba entrance solution.

Contactless Wave Switch activates the doors automatically by a simple hand wave, without the need to touch any handle while leaving the toilet.

**Additional Electronic Locking device can be added for private/disabled toilet solutions.**

\* Following examples show private/disabled toilet application.

For public spaces, we do not require locking device & lock/unlock buttons



# The intelligent Sliding Door solution for barrier-free WC applications

## Low Energy Sliding Door Operator CS 80 MAGNEO

- The dormakaba Low Energy Sliding Door Operator CS 80 MAGNEO can be activated extremely easily, thus making it significantly more user-friendly for people with disabilities or limited mobility..
- Door weight limitation – 80KG
- Expanded button program  
The toilet accessory feature within the CS80 MAGNEO has been enhanced for both control functionality of the door and also for the visual representation of the functions

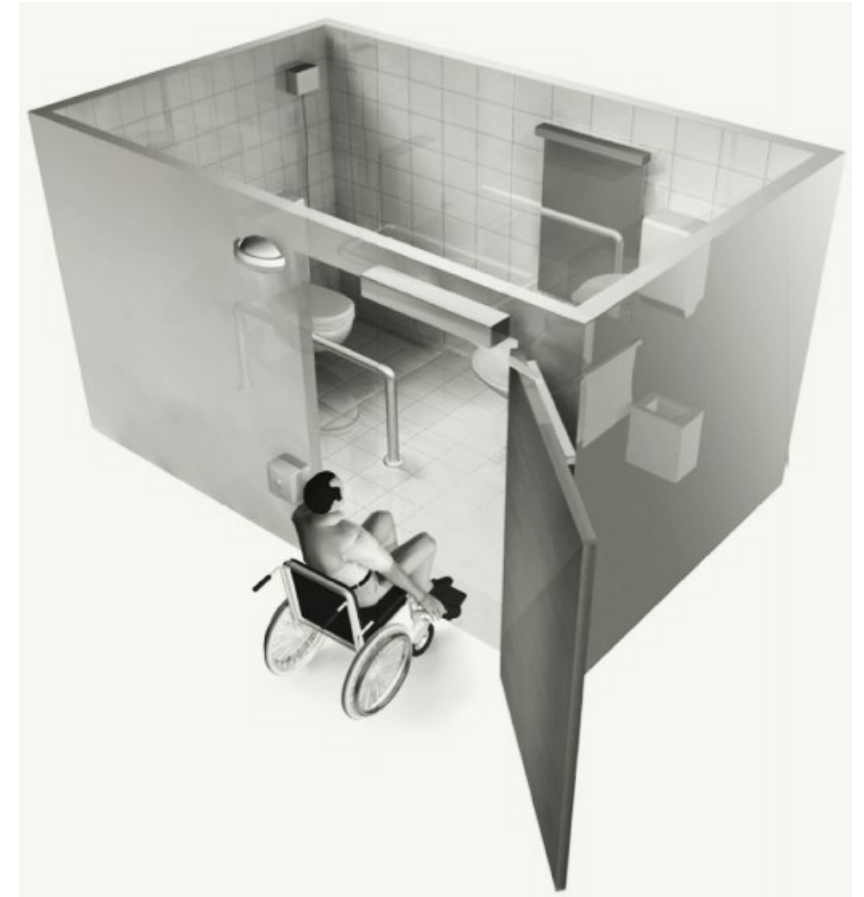


# Barrier-free toilet application with swing door operators

## The system requires:

- Electric strike, a motor lock or similar devices to keep the door closed.
- Large-surface pushbuttons / touchless switches are installed on the inside and on the outside of the toilet while a status indicator (vacant/occupied) on the outside and an occupied light indicator on the inside of the toilet indicate the current status.
- As an option, we provide an emergency pushbutton (to be mounted on the outside), which allows to open the door immediately in the event of an emergency.

Please note that dormakaba recommends connecting the barrier free toilet to an additional emergency call system (by others).



# WC Applications – Swing Doors – ED100 & Porteo

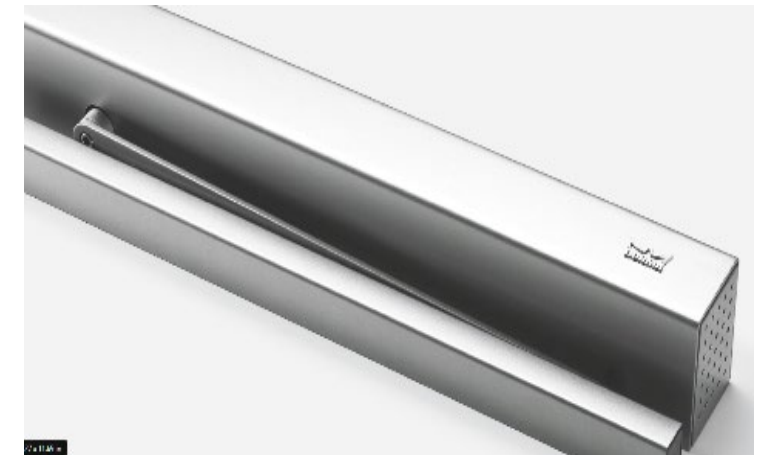
## ED100 Swing Door Operator

- Electromechanical doors closer / operator unit
  - Cam action doors closer mechanism including adjustable spring
  - Pull and push forces meet both the requirements of EN 1154 & UL 10C
  - Non handed unit
  - Durability tested up to 1,000,000 cycles.
  - Electronic brake circuit powered by the generated energy of the motor during the closing cycle
- Door weight limitation – 160KG
- With the aid of the Upgrade Card, the required special functions are allocated to the in- and outputs of the control unit to facilitate the connection of the respective components



## Porteo Swing Door Operator

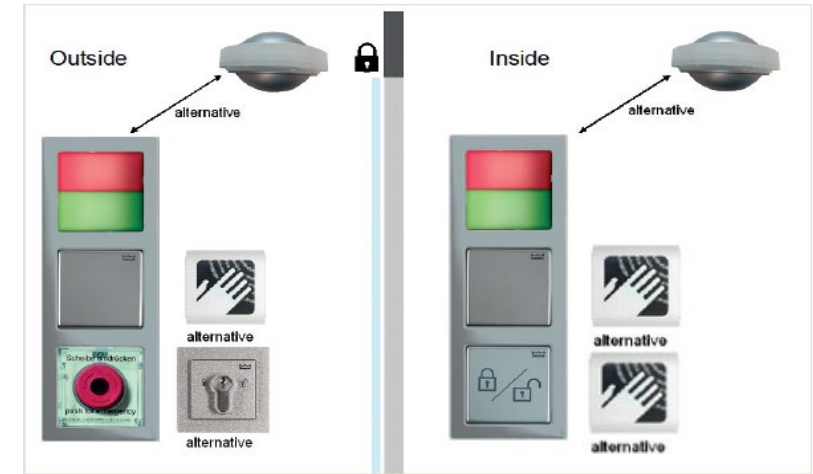
- The Low Energy PORTEO offers a convenient way to open doors effortlessly and to close them automatically. With all the elegance of the dormakaba Contour design.
- The PORTEO is specifically suited to light doors, performing all the functions needed to make life just that little bit easier for all.
- Door weight limitation – 100KG



# Touch-Less Toilet application – Activation Devices

## Toilet control unit in private spaces / disabled toilets with locking device

- The door can be equipped with a CS80 MAGNEO sliding door operator/ ED100 or Porteo swing door operator featuring a locking device
  - ED100: additional Upgrade Card Barrier-Free Toilet is added for various integrations
  - Porteo: with additional SM202 module to integrate pushbutton activations
- Flat pushbuttons for activation are mounted internally and externally. Alternately we can use touchless Magic Switches. Internally, there is also a flat pushbutton to control the locking device
- For “engaged/vacant” displays, a status display (red/green) will be shown externally and internally
- An emergency opening device can be optionally mounted externally to allow the door to be opened quickly in an emergency



## Toilet control unit in Public spaces

- The door can be equipped with a CS 80 MAGNEO sliding door operator / ED100 or Porteo swing door operator without any locking device
- Flat pushbuttons for activation are mounted internally and externally. Alternately we can use touchless Magic Switches

