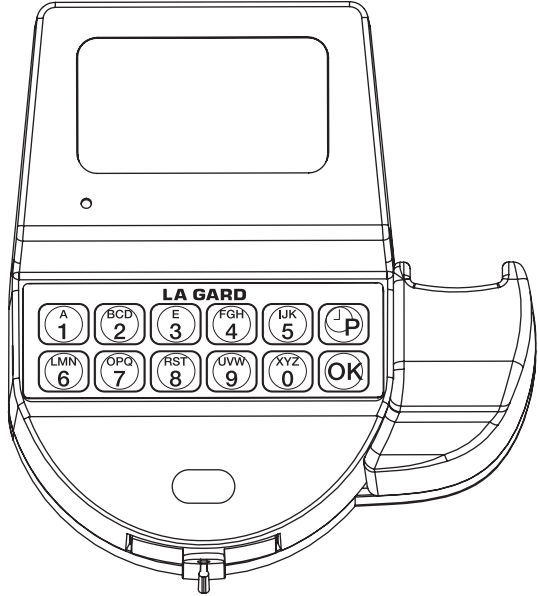




LOCK RESET SOFTWARE INSTRUCTIONS



SMARTPOINT/SMARTLINC II

This system is available with or without biometric identification ability. If using the SMARTLINC II, without biometric ability, please disregard any reference, in these instructions, to fingerprints. The functionality of the two systems are identical except for the use of fingerprints for identification.

The SmartPoint/SmartLinc II Lock reset procedure requires the use of both the Lock Reset Software and the Reset Box (P/N 6066). The Logic Module can be reset by reprogramming the unit using the SmartPoint/SmartLinc II Setup Software.

SOFTWARE INSTALLATION

The SMARTPOINT/SMARTLINC II Lock reset software is set to autorun. If autorun does not initiate, select the START button and enter the letter for the CD ROM drive. Select launch.exe. Once the AUTORUN feature begins the first screen will appear (see screen 1). The first screen lists three options; Install Software, Operating Instructions and Contact Us.

- All instructions for the Reset Procedure are available on this CD in PDF format. Adobe Acrobat Reader will be required to view them. Select the button marked Operating Instructions, install Acrobat Reader and then open the instruction sheets.
- Select the Contact Us button and a window will open showing the address, phone number, email and website for Kaba Mas.

1. Select the Install Software button to begin software installation (see screen 1).
 - The installer will check for Microsoft.NET framework 2.0 or higher and will install 2.0 if required (see screen 2).
2. Click the Accept button and the files will begin to copy (see screen 3).
 - This process can take up to 5 minutes (see screen 4).



Screen 1



Screen 2



Screen 3



Screen 4

The Welcome screen will appear (see screen 5). Click the Next button and the program will prompt you to select the Agree button to accept the License Agreement (see screen 6).

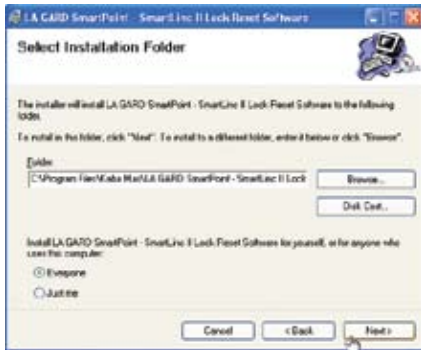


Screen 5

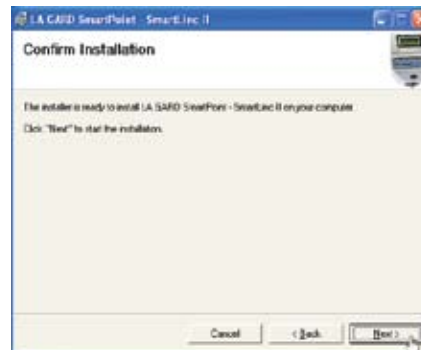


Screen 6

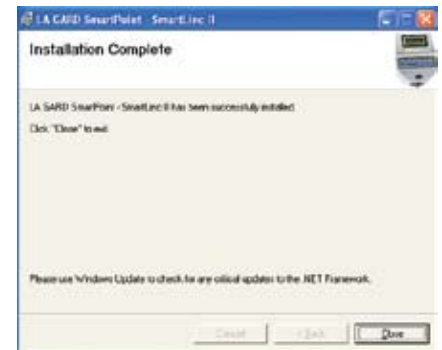
SMARTPOINT/SMARTLINC II Setup Software follows a series of prompts until the installation is complete (see screens 7, 8 & 9).



Screen 7



Screen 8



Screen 9

Once the installation of selected components is complete, an icon will be installed on the computer's desktop (see screen 10). Double-click on the icon to open the Reset Software (see screen 11).

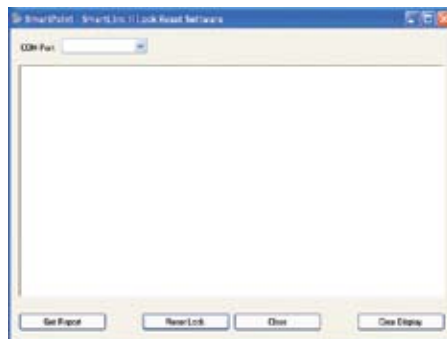
COM Port Set-up

In order to reset a lock the correct COM port must be selected. Select the appropriate COM port from Menu (see screen 12).

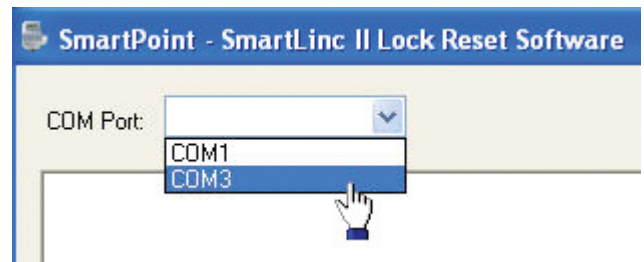
Note: If you do not know which COM port to use, check the computer's device manager.



Screen 10



Screen 11

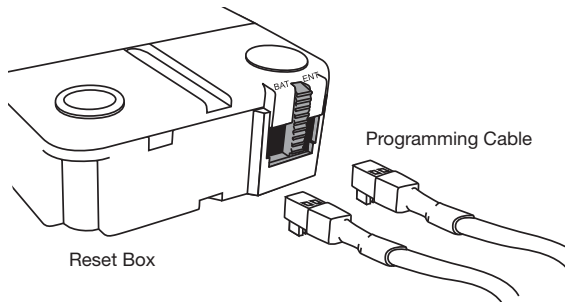


Screen 12

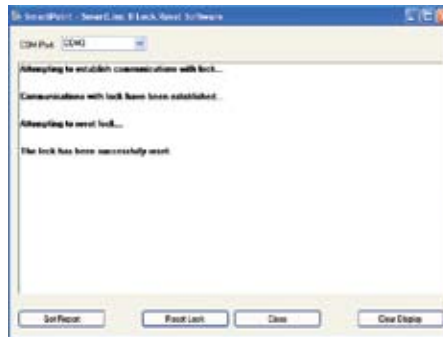
ACQUIRING LOCK REPORT

This function requires the use of the Programming Assembly, Lock Cable and Serial Interface (P/N 2034) and the Reset Box (P/N 6066).

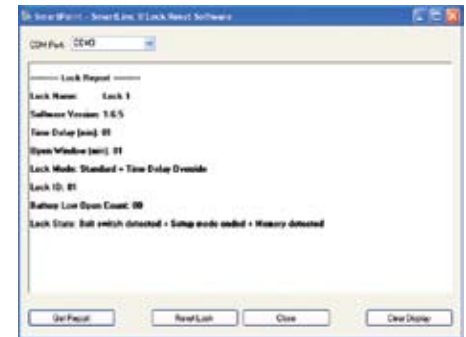
1. Connect the reset box to the lock through the port on the lock marked BAT.
 2. Connect a 9V battery to the reset box. The use of quality Energizer e2 Titanium or Duracell Ultra 9-Volt Alkaline batteries is recommended (see drawing 1).
 3. Plug Interface and cable into PC.
 4. Plug the 2034 cable into the lock through the port on the lock marked ENT.
 5. Press the GET REPORT button on the software.
 - If the COM port has been incorrectly set, an error message will appear. **Note: If you do not know which COM port to use, check the computer's device manager.**
 - If one or more of the cables isn't properly connected an error message will appear. Check all connections and try again.
 6. Once report is complete a message will appear in the window (see screen 14). Sample shown is a report of a lock before reset.
- NOTE: If the computer does not have a serial port, a serial to USB adapter will be required.**



Drawing 1



Screen 13



Screen 14

RESETTING THE LOCK

This function requires the use of the Programming Assembly, Lock Cable and Serial Interface (P/N 2034) and the Reset Box (P/N 6066).

1. Connect the Reset Box to the lock through the port on the lock marked BAT.
 2. Connect a 9V battery to the reset box. The use of Quality Energizer e2 Titanium or Duracell Ultra 9-Volt Alkaline batteries is recommended (see drawing 1).
 3. Plug Interface and cable into PC.
 4. Plug the 2034 cable into the lock through the port on the lock marked ENT.
 5. Press the RESET LOCK button on the software.
 - If the COM port has been incorrectly set, an error message will appear. **Note: If you do not know which COM port to use, check the computer's device manager.**
 - If one or more of the cables isn't properly connected an error message will appear. Check all connections and try again.
 6. Once reset is complete a message will appear in the window (see screen 13).
 7. Repeat steps 4 - 6 for each lock to be reset.
- NOTE: If the computer does not have a serial port, a serial to USB adapter will be required.**